

SOUTHEND UNITED

FOOTBALL CLUB
1906 - 1997

OFFICIAL PROGRAMME £1.60

OLYMPIC

OFFICIAL
TEAMWEAR
SUPPLIER



OLYMPIC

OFFICIAL
FOOTWEAR
SUPPLIER

NATIONWIDE LEAGUE DIVISION ONE VS SWINDON TOWN

Saturday 31st August 1996 K.O. 3.00pm

At the Roots Hall ground, Victoria Avenue, Southend-on-Sea.



TELEWEST
COMMUNICATIONS

OFFICIAL CLUB SPONSOR



Coming to Roots Hall



All of these and many more!

Nationwide Football in Southend

For All Ticket Enquires Dial 01702 304090

For Hospitality Packages Dial 01702 304050

Telewest Communications & Southend Utd Together-Essex's Top Team



TELEWEST
COMMUNICATIONS



For your evening entertainment, why not visit Boots & Laces Cabaret Nightspot on Eastern Avenue • Booking Hotline 01702 462111

These notes are being written just before we leave for Portsmouth, but with the horror of Oxford still firmly in our minds.

I said after the match that throughout my career, I have never seen, let alone be involved in such appalling defending as we produced at the Manor Ground on Saturday after conceding a goal to the home team after half an hour. During that first half we had been bright and alert, with Mike Marsh and Phil Gridelet getting a grip on mid-field. But after that things went from bad to worse with Oxford being allowed to pick up the ball in all parts of the field and run at people at will. That's a recipe for disaster at any level and whilst our rear guard deserved the criticism, the team as a whole has to remember that when opponents have the ball we are all defenders.

Coming after the Fulham match, the Oxford performance was doubly disappointing, for we had already let ourselves down badly in the Coca-Cola Cup game and should have learned from that. Clearly we had'nt and I can assure you that players were left in no-doubt after both occasions what our feelings were. It's not nice to hear your own Supporters turning on the team and classifying their efforts as a "load of rubbish". Not nice at all, but I could not blame those who went to Oxford and stood out on a wet terrace to witness our performance.

As I say, Portsmouth will be history when you read this but it is before then as I write and I have changes in mind. They say Organisation, Motivation and Application are three qualities needed to win through. Personally I never needed anyone to motivate me or to make me apply myself. My own professional pride in my own performance took care of that and I think any professional worth the name says the same and hopefully that goes for our squad who will show the character needed to climb away from the present difficulties.

Today, we entertain Swindon and my old colleague, Steve McMahon, who won't be out to do us any favours naturally. For ourselves, we need both performance and points, setting us up to put right that which we did wrong in the Coca-Cola against Fulham next Tuesday at Craven Cottage.

Finally, even though we have tried your patience, please get behind the team, your support is important at all times and never more so than when things are tough. Football has a habit of turning up surprises and just when things look darkest, you suddenly get a shot in the arm to turn things round. Let's hope and believe that today is our turn.

Ronnie's REPORT



Ronnie Whelan

Southend United F.C. - Roots Hall, Victoria Avenue, Southend-on-Sea, Essex SS2 6NQ. - Tel: 01702 30 40 50 - Fax: 01702 33 01 64

PRESIDENT

N.J. Woodcock

CHAIRMAN & MANAGING DIRECTOR

V.T. Jobson

VICE CHAIRMAN & CHIEF EXECUTIVE

J.W. Adams

DIRECTORS

J. Bridge, D.M. Markscheffel

W.R. Kelleway, B.R. Gunner

C. Wooldridge, R.J. Osborne

ASSOCIATE DIRECTORS

W.E. Parsons, A. Jobson

MANAGER

R. Whelan

ASSISTANT MANAGER

T. Foley

COACH

Peter Trevejian

YOUTH TEAM COACH

Peter Johnson

HON. MEDICAL OFFICER

Dr. A. K. Sinha

SPORTS THERAPISTS

J. Gowens & S. Bartham

MARKETING DIRECTOR

C. Wooldridge

COMMERCIAL MANAGER

Anne-Marie Clark

STADIUM MANAGER

D. Jobson

SAFETY OFFICER

G. Wright

PROGRAMME EDITOR

K. O'Donnell

TELEPHONE SERVICES

Shop 01702 60 13 51 / 30 41 40

Ticket Office 01702 30 40 90

Soccerline 0839 66 44 44

Infoline 0839 66 44 43

Soccer Fax Line 0336 41 81 77

All 0839/0336 calls cost (39p per min cheap rate)
(49p per min peak rate)

FRONT COVER DESIGN BY:

Billy Marwhinney & Lol Keen

REMAINDER, DESIGNED, TYPESET & PRINTED BY:

Progressive Printing (U.K) Limited

Quality through pursuit of excellence

GOOD LUCK TO THE BLUES FOR THIS SEASON !

PROGRESSIVE PRINTING (UK) LIMITED
RUTHERFORD CLOSE, LEIGH-ON-SEA, ESSEX SS9 5LQ
TEL: (01702) 520050 FAX: (01702) 420273

SOUTHEND UNITED F.C. SOUTHEND UNITED F.C. SOUTHEND UNITED F.C. SOUTHEND UNITED F.C. SOUTHEND UNITED F.C.

Welcome TO OUR VISITORS



STEVE McMAHON (PLAYER/MANAGER)

In his first full season as Player/Manager the former Liverpool favourite led Swindon Town to the Second Division Championship in style. Alas, injuries prevented him making as big a contribution as he would have liked on the pitch, but he did make 21 League appearances.

As a player he is a competitive dynamo who has won acclaim at the highest level of the game and collected almost all the honours available for both Club and Country yet he declares that winning the Second Division Championship was the highlight of his career. He made his League debut at Sunderland in August 1980 and scored 11 goals in 100 League games before a £300,000 transfer to Aston Villa in 1983. By then Steve was a seasoned England Under 21 International and went on to win a European Championship medal in 1984. With Villa he emerged as a midfield general of the highest order but his career in the Midlands was short lived. Kenny Dalglish making him his first big buy with a £375,000 move to Anfield.

By the end of his first season with Liverpool Steve had League and F.A. Cup medals to add to his collection as the Reds clinched the "double". There were more to come as he shared in Liverpool's phenomenal success, while at international level he was in the 1990 World Cup squad and won 17 caps.

On Christmas Eve 1991, Manchester City paid £900,000 for his services and until his move to Swindon as Player-Manager in November 1994 he had continued to perform at the highest level.

FRASER DIGBY (GOALKEEPER) Fraser served his apprenticeship at Old Trafford but was not given a first team opportunity by Manchester United. In December 1986 Town paid £32,500 for his transfer and so impressive was he that he gained England Under 21 recognition to add to his England Schoolboy and Youth honours. In 1992-93 he did return to Manchester United on loan as cover but his only senior appearance at Old Trafford was for Town in the Premiership. Has played twice at Wembley in the play-off finals and this year celebrates a Testimonial Season.

FRANK TALIA (GOALKEEPER) Hails from Melbourne, Australia, and was playing for a Club called Sunshine George Cross when he was spotted by a scout playing for the Australian Under 21 side. Was invited to England and had trials with Chelsea, QPR and a number of other English and Scottish Clubs before Blackburn Rovers signed him in August 1992. After a brief spell on loan with Swindon last year he eventually transferred in November 1995 and made 16 League appearances.

IAN CULVERHOUSE (DEFENDER) A cultured defender who was a polished fullback with Norwich City and excels in the role of sweeper. Ian is a product of the Tottenham Hotspur youth policy. Played only one senior game for Spurs, at Notts County 21.2.84, before joining Norwich City for £50,000 in October 1985. Norwich wanted £900,000 for his transfer at the end of December 1994 but a Football League tribunal set the fee at £250,000. He was included in the PFA Second Division representative team last season.

FREDERIC DARRAS (DEFENDER) Signed a three year contract on the 8th August from French Club Bastia. Frederic spent 11 years with French double winners Auxerre before moving to Bastia. He represented France at Under 18 and 21 level and has made no fewer than 19 European Cup appearances, including a quarter final tie against Fiorentina.

JASON DRYSDALE (DEFENDER) Joined Town from Newcastle United on March 23rd 1995, for a fee of £340,000 but has been desperately unlucky with injuries that have limited his appearances.



SWINDON
TOWN
F.C.

for Town to just ten starts thus far. A former Watford trainee, he won a FA Youth Cup winners medal with the Hornets.

KEVIN HORLOCK (DEFENDER/MIDFIELD) A current member of the Northern Ireland squad, Kevin has proved a great asset to the team arriving from West Ham United with no senior appearances, on a free transfer, in the summer of 1992. Kevin had joined the Hammers from school and scored 11 goals from left back for their Youth Team in 1990-91. A good tackler and striker of the ball he demonstrated his scoring ability at senior level last season by netting (16 goals 12 in the League), including his first League hat-trick at Bristol Rovers on September 16 1995.

EDWIN MURRAY (DEFENDER) Signed for Town as an Associated Schoolboy in 1988 and graduated through the ranks to gain professional status in 1991. Made his League debut against Oxford United on March 5th 1991 and was in the starting line up for the first time in an FA Cup 4th Round tie with Watford (28.1.95), when he was Man of the Match.

WAYNE O'SULLIVAN (DEFENDER) Talented young full-back who was given his senior opportunity in an Anglo Italian Cup tie at Oxford United in September 1992. Has progressed well and last season not only established himself in the senior side but was also a regular in the Republic of Ireland's Under 21 squad, being first selected for the game against Latvia in October 1995.

MARK ROBINSON (DEFENDER) Joined the apprentice ranks at West Bromwich Albion on leaving school in June 1985 and made his League debut against Sheffield Wednesday on April 22nd 1986. Was given his chance with an extended first team run in 1989 and such was his form that Newcastle United swooped in with a cheque for £450,000 in March 1993. Mark lost his place through injury and found himself in the shadow of some great names, so gladly moved to Wiltshire for then a Club record of £600,000 in July 1994 and made his Town debut vs Port Vale.

MARK SEAGRAVES (CENTRAL DEFENDER) A former Liverpool apprentice and England Youth International, Mark was seen as the ideal partner for Shaun Taylor at the heart of the defence when Town paid Bolton Wanderers £100,000 for his registration in June 1995. Made his Town debut at Hull City on the opening day of the season and played in the opening 17 games before injury curtailed his involvement to 25 starts for the season. Mark's League debut was for Norwich City at Coventry City (22.11.86) and he played three games while on loan from Liverpool before a £100,000 transfer to Manchester City in September 1987.

SHAUN TAYLOR (DEFENDER) This will be Shaun's fifth season with Swindon since being signed by Glenn Hoddle on July 1991. Has hardly missed a game, played in the Championship side last season. Shaun is the Club Skipper.

PAUL ALLEN (MIDFIELD) Paul was signed on a free transfer in October 1995 from Southampton. Started his career with West Ham United as a Apprentice in 1979 and went on to make 197 appearances, scoring 11 goals. In June 1985 Paul signed for Tottenham Hotspur for £400,000 where he made 377 appearances and scored 28 goals. He has loan spells at Luton Town and Stoke City during his spell with the Saints.

LEE COLLINS (MIDFIELD) Following a successful trial period and impressing Steve McMahon, Lee signed a two year contract in November 1995. Made his first team debut in the Auto Windscreens

Shield defeat by Hereford United.

TY GOODEN (MIDFIELD) Signed by John Gorman in 1993 after being released by Wycombe Wanderers following a successful trial period. Made over 30 appearances and received a Championship Medal, last season.

SCOTT LEITCH (MIDFIELD) This former Motherwell, Dunfermline and Heart of Midlothian £15,000 bargain buy was delighted when Steve McMahon offered him a permanent move after enjoying a successful loan period last season.

ALEX SMITH (MIDFIELD) Former Everton Trainee signed professional forms in January 1996. Alex played in Everton's European Cup Winners Cup campaign, but never managed to play in the Premiership.

MARK WALTERS (MIDFIELD) After starting his career at Aston Villa, Mark has enjoyed successful spells at Glasgow Rangers, and Liverpool. Joined Swindon in the summer on a free transfer from Southampton and is looking forward to relaunching his career at The County Ground. Mark has one England Cap and three Championship Winners medals in his possession and is hoping to add to his collection at Swindon.

KEVIN WATSON (MIDFIELD) Came through Tottenham's junior ranks having joined the Club at the age of eleven. Made 12 first team appearances under Terry Venables in 1994. This 22 year old midfielder looks sets to have a bright future ahead of him and is looking forward to playing first team football.

WAYNE ALLISON (STRIKER) Top shot in his first season with Town scoring 20 goals, 16 of them in the Second Division Championship. A very popular figure who makes the most of his height and weight to unsettle defenders. A Yorkshireman, he served his apprenticeship with Halifax Town.

STEVEN COWE (STRIKER) Could prove to be Steve McMahon's most astute signing if he realises his potential. Has two good feet and great awareness of players around him who he brings into play like a veteran. Steven was recruited on loan initially, as cover following the injury to Finney, but impressed the management so much that a permanent move was quickly arranged.

STEPHEN FINNEY (STRIKER) No relation to Tom Finney though started his career with Preston North End who he signed for as a Schoolboy in December 1987 and gained professional status in 1991. It was at Maine Road that Steve McMahon came into contact with him and when City released Steve on a free, he quickly signed him in the summer of 1995 as cover. However, injury to Peter Thorne saw Steve make a scoring League debut at Hull on the opening day of the season and he was joint top scorer with 16 goals when he suffered a broken ankle at Burnley on March 16 1996.

PETER THORNE (STRIKER) Snatched from the shadow of Alan Shearer in January 1995, Peter is a strong robust Striker in the mould of the England hero. Joined Blackburn Rovers as a trainee in 1989 and made his only first team appearance for them at Wembley in the Charity Shield match. With Swindon he scored four goals in his first two games and netted all five goals against TP Seinajoki of Finland in the summer of 95'.

TODAYS visitors

WITH KEVIN O' DONNELL

It has certainly been an "interesting" last 10 years for Swindon Town Football Club and its supporters. Under Lou Macari they rose from the Old Fourth Division to the verge of the First Division.

Macari had left by the time the Robins won promotion in 1990, Ossie Ardiles having taken over. Then came the revelations of financial irregularities, demotion to Division Two and the betting scandal during Macari's tenure.

Despite all that, the club overcame the off field trauma and under Glen Hoddle promotion was duly gained. And it was won with very good quality football including a truly memorable play off final victory over Leicester City.

Hoddle duly departed and Swindon went into their 1993 - 94 Premiership campaign under John

Gorman. The club continued to receive many compliments for the quality of their play. Results did not match that quality and they came straight back down.

Steve McMahon was appointed in November 1994 as the new Player Manager but his side were already in deep relegation trouble and he was unable to reverse the position.

However, last season saw an upturn again. The Robins lost only four League matches all season as they won the Second Division title at a canter.

Their success in the League was not affected by a good run in the F.A.Cup which saw them reach the fifth round where they lost 0-2 in a replay at Southampton.

TOP TEAMS HAVE TOP BRANDS



the official suppliers to

SOUTHEND UNITED FOOTBALL CLUB

and also to

Portuguese National Team, Sport L. Benfica, F.C. Beveren,
Dundee Football Club, Leyton Orient Football Club
and other Continental Teams.

Call **0171-5150020** now for our TEAMWEAR and GAMEWEAR brochure
15% discount* on RRP for all Southend United Football Club Supporters.

* only on Olympic Teamwear / Gamewear brochure and except for current promotions.

Visitors HISTORY

- | | |
|--|---|
| <p>1881 Club formed by Reverend William Pitt, adopting the present name two years later.</p> <p>1895 The Robins move to their present home at the County Ground.</p> <p>1910 The Southern League Club reach the semi-finals of the F.A. Cup but go down 0-2 to Newcastle United.</p> <p>1912 F.A. Cup semi-finalists again but lose to Barnsley 0-1 in a replay.</p> <p>1920 Founder members of Football League Division Three, the Robins beat Luton Town 9-1 at the County Ground in their opening League fixture, which remains the Club's record League victory.</p> <p>1930 Record defeat as Swindon crash 1-10 to Manchester City in an F.A. Cup fourth round replay.</p> <p>1933 Re-elected to the Football League after finishing bottom of the Third Division (South).</p> <p>1956 Re-elected for the second time having again finished last in the Southern Section.</p> <p>1957 Re-elected for the third time.</p> <p>1958 Founder member of the, then, new Division Three after unbroken membership of the Old Southern Section in which the club never finished higher than fourth.</p> <p>1963 Runners up to Northampton Town in Division Three, Swindon gain promotion to Division Two for the first time.</p> <p>1965 Relegated to Division Three.</p> <p>1969 One of the best years in the Club's history. The Robins gain promotion to Division Two again as runners up to Watford, beat Arsenal 3-1 at Wembley to lift the Football League Cup and win the Anglo Italian League Cup Winners Cup, beating Roma 5-2 on aggregate.</p> <p>1970 The Robins achieve their highest League position so far with 5th place in Division Two and win the Anglo Italian Cup.</p> | <p>1972 Record County Ground attendance of 32,000 for an F.A. Cup third round tie against Arsenal but the Gunners exact revenge for the League Cup Final defeat by winning 2-0.</p> <p>1974 Relegated to Division Three.</p> <p>1982 The decline continues as the Robins go down to Division Four.</p> <p>1986 Fourth Division champions with a record 102 points and record 32 victories.</p> <p>1987 Promoted to Division Two after beating Gillingham in the Final of the new play off system.</p> <p>1988 The Robins miss out on a third successive promotion - they reach the play offs but lose 1-2 on aggregate to Crystal Palace in the semi final.</p> <p>1990 Swindon beat Sunderland 1-0 at Wembley in the play off final before 72,873 fans but promotion to Division One becomes demotion to Division Three for financial irregularities - reinstated to Division Two on appeal.</p> <p>1991 In the aftermath of the financial scandal the Robins come close to relegation to Division Three after finishing 21st in Division Two - Glen Hoddle appointed Manager in April.</p> <p>1992 Founder member of the new Division One.</p> <p>1993 A rejuvenated Swindon reach the play offs again and beat Leicester City 4-3 in a brilliant game at Wembley before 73,802 fans to gain promotion to The Premiership, but the shine is taken off the celebrations with the news that Glenn Hoddle is to leave the club.</p> <p>1994 Relegated to Division One after finishing bottom of the Premiership having recorded the lowest victories (five) and conceded a record 100 goals - Steve McMahon, appointed Player Manager in November, is sent off in his first game here at Roots Hall.</p> <p>1995 Relegated to Division Two.</p> <p>1996 The Robins bounce back at the first attempt as Champions of Division Two.</p> |
|--|---|

KICK BACK

PREVIOUS ENCOUNTERS

This afternoon Blues renew acquaintance with the club which provided their first ever opposition. Almost 90 years ago to the day Swindon Town Reserves were the first ever visitors to the original Roots Hall for a Southern League Division Two match.

Blues' career did not start well as the visitors triumphed by a slender 1-0 margin. Blues lost only two more Southern League matches as they went on to lead the Division Two at the end of that first season. Their cause was not helped by a 0-0 draw at Swindon in the return fixture but revenge was exacted for the first day defeat with a 7-0 victory in a late season friendly.

The first meetings with Swindon's first team took place two years later when Blues gained promotion to the Southern League First Division. In the 1908-09 season Blues lost 2-4 at the County Ground but won the return fixture 6-2 at Roots Hall.

Both clubs were founder members of Division Three of the Football League in 1920. By then Blues had moved to the Kursool and the first Football League match with Swindon was played at that venue. Blues lost 1-3 and went down 0-3 at the County Ground a week later.

Blues do not have a good record there. They lost on their first seven visits and have won only 6 times in the 47 League matches they have played there, the last coming over 40 years ago.

There have been some great games involving Blues and Swindon over the years. In the 1950-51 season Blues had lost 1-4 in the League at the County Ground and 0-3 at home in the F.A. Cup. The League match at the Stadium appeared to be running to that form as the visitors led 2-0 after 14 minutes. However, Blues stormed back and had drawn level within six minutes. By half time they led 5-2 and the second half yielded three more goals for Blues to win by an incredible 8-2 margin. It should have been 9-2, which would have equalled Blues record League victory over Newport County, but although a shot by Tommy Tippet seemed clearly to have crossed the line the referee would not award the "goal".

Tippet had already notched up a hat trick. Cyril Grant and Reg Davies both scored twice and Jimmy Lawler was the other Blues marksman.

In the 1968-69 Season Blues, then in Division Four travelled to the County Ground in the third round of the F.A. Cup. They were very much the underdogs against a side destined for promotion to Division Two and which would destroy Arsenal in the League

Cup Final at Wembley that season.

However, Blues stunned the home fans in a crowd of 18,828 by taking the lead after 13 minutes. After a good move involving Chico Hamilton and Mel Slack, Phil Chisnall received the ball on the left. He put fullback Graham Birks clear with a clever pass and Birk's cross was volleyed home by Billy Best.

The second goal came just after the interval and was another brilliant move involving Eddie Clayton, Tony Bentley, Billy Best and Gary Moore who set up Chico Hamilton to apply a great finish.

Swindon threw everything they had at Blues in an effort to retrieve the game but it was Blues' day, when the entire team played for each other and it was Blues who progressed to the fourth round in which they were to suffer an anticlimax with a 1-2 defeat at Mansfield.

Ten years later Swindon visited Roots Hall for a Third Division match. Blues were outsiders for promotion and helped their cause with a 5-3 victory. Mike Stead started the scoring spree with a great shot and by half time Blues held a comfortable 3-0 lead.



OPEN

**SUNDAY 9am to 2pm,
MONDAY TO SATURDAY 8.30am to 6pm**

**UNIT 1, KELVIN ROAD
MANOR TRADING ESTATE**

**BENFLEET HOTLINE
01268 792272**

The visitors came back strongly in the second half with three goals of their own but Blues also scored twice to gain the two points. Blues other scorers were Colin Morris from the penalty spot, Mickey Laverick and Andy Polycarpon, who scored twice. On target for Swindon were Andy Rowland and Allan Mayes, Mervyn Cawston scored an own goal.

By Christmas 1984 both Blues and Swindon had dropped to Division Four. On Boxing Day Blues appeared to be heading for a comfortable victory as they led 3-0 through a Steve Phillips penalty and two goals from Glen Pennyfather and Trevor Whymark.

However, goals for Swindon from Peter Coyne and Colin Gordon left Blues hanging on grimly for only their seventh victory that season. They had to be grateful to goalkeeper Jon O'Brien for a brilliant double save in the last minute to preserve their 3-2 lead.

Seven years later the Clubs' fortunes had dramatically improved. The Roots Hall clash in 1991-92 had the same scoreline and has to go down as one of the best matches I have ever seen.

Glen Hoddle had turned Swindon into a highly entertaining

side, as had David Webb with Blues. A crowd of 7,709 enjoyed a real see-saw match bursting with quality. Brett Angell scored possibly his best goal for Blues with a tremendous 17th minute volley from the edge of the penalty area.

Blues penalty bogey continued in the second half when Dean Austin's kick was saved to make it 8 misses from 9 kicks. That miss appeared crucial when Swindon equalised through Steve White in the second half but Blues powered ahead again through Angell and Steve Tilson.

Swindon were not yet beaten and Duncan Shearer reduced the arrears with nine minutes left. The last period was rather frenzied but Blues held on to win a truly great game 3-2.

When Swindon last visited Roots Hall it was another interesting game, although the visiting fans are unlikely to have enjoyed it much.

It was Steve McMahon's first game as Player Manager and it was not a happy start. Blues took the lead after only two minutes when Roger Willis headed in Ronnie Whelan's free kick to notch his first goal for the club.

McMahon was booked for a first half foul on Phil Gridelet and was sent off in the 74th minute after a clash with Roger Willis. McMahon looked aggrieved and protested his innocence but Willis was certainly not faking a broken nose and a gash requiring stitches. Julian Hails came on as substitute to replace the injured Willis to make his Blues debut.

By that time Blues had scored a second goal through Andy Edwards and it was Peter Taylor's men who were celebrating a 2-0 victory at the end of the game.

Today's match is the 20th between the clubs at the present Roots Hall ground. The first match was in 1955-56 and ended goalless before a crowd of 12,500, the highest for a match here.

Swindon have won five times in their previous nineteen visits, in consecutive seasons between 1957 and 1962 but not in their last twelve appearances here.

They are also the club in this season's First Division that Blues have played on the most occasions. Of the 94 League games so far Swindon lead the way with 40 wins to 31 and 23 draws. They have scored 153 goals to Blues 131.

Southend Community Care Services NHS Trust



We aim to be the principal provider of the highest, quality community services, responding to the needs and aspirations of users



**SOUTHEND
COMMUNITY
CARE
SERVICES
NHS TRUST**

For further information contact:
Communications Department
Tel: 01702 546354 ext 247

Kit SPONSORS

SPONSOR YOUR FAVOURITE PLAYERS KIT



If you wish to sponsor a player, Please call our Marketing Department on (01702) 30 40 50



KEEPER

SIMON ROYCE

FULL KIT

THE BULL INN

Great Totham

KEEPER

PAUL SANSOME

FULL KIT

TED PARSONS

DEFENDER

MARK STIMSON

FULL KIT

DEFENDER

KEITH DUBLIN

FULL KIT

DEFENDER

ANDY HARRIS

FULL KIT

KINGS CHALETs LTD

DEFENDER

MARK McNALLY

FULL KIT

KEVIN KIRBY

DEFENDER

LEO ROGET

FULL KIT

DEFENDER

MIKE LAPPER

FULL KIT

J. HANKS

MIDFIELDER

ANDY SUSSEX

FULL KIT

MIDFIELDER

MIKE MARSH

FULL KIT

**IDOLS LICENSING
+ PUBLICITY**

MIDFIELDER

PHIL GRIDELET

FULL KIT

**C.T.A
INTERNATIONAL LTD**

MIDFIELDER

STEVE TILSON

FULL KIT

**TECHTUNE
(01268 766669)**

MIDFIELDER

PAUL BYRNE

FULL KIT

COLLINSON FENCING

MIDFIELDER

JULIAN HAILS

FULL KIT

MIDFIELDER

JOHN NIELSEN

FULL KIT

JAMES CUSSEN

STRIKER

ANDY THOMSON

FULL KIT

STRIKER

ANDY RAMMELL

FULL KIT

SIR TEDDY TAYLOR

STRIKER

JEROEN BOERE

FULL KIT

STRIKER

RICHIE HANLON

FULL KIT

MANAGER

RONNIE WHELAN

FULL KIT

PETER DEVONALD

ASS. MAN

THEO FOLEY

FULL KIT

**ORSETT HALL HOTEL
(01375 891402)**

**TOP DOGS
choose**

Universal



**See the fabulous
Universal range
of bicycles at**



**Toys 'R' Us, Olympus,
Littlewoods, Empire Stores,
Grattan, Charlie Browns,
Great Universal Stores**

**- and most good bicycle shops
throughout the country.**

**Universal Cycles plc
Brook Road Industrial Estate, Rayleigh, Essex SS6 7UY**

Universal

Trust us to help football

The Football Trust is helping the game at all levels - from providing kit for school teams, pitches and changing rooms for grass roots football, safety and improvement work throughout the game right up to providing vital assistance to help League clubs complete the essential task of redeveloping their grounds in line with the Taylor Report.

Over the last 20 years the Trust has received and distributed £250m from Littlewoods, Vernons and Zettlers Pools and Littlewoods Spot the Ball competition for the benefit of football.

Up and down the country, clubs are building new grounds and stands, installing seating, and providing safe and comfortable facilities for their spectators to enjoy. Every club depends on the support of the FOOTBALL TRUST and the success of the pools companies. Both are crucial for football's future.



THE FOOTBALL TRUST
Helping the game



LITTLEWOODS VERNONS ZETTERS
*Making sure football wins
the Pools each week*

THE FOOTBALL TRUST, WALKDEN HOUSE, 10 MELTON STREET, LONDON NW1 2EB

GET YOUR

Evening Echo

**EVERY NIGHT FOR THE LATEST NEWS,
VIEWS & INTERVIEWS WITH THE BLUES**

**PLUS EVERY WEDNESDAY READ MIKE LAPPER'S
COLUMN EXCLUSIVELY IN ECHOSPORT**

Reserves & YOUTHS

Good Afternoon everybody. The Reserves have now played two Capital League Matches since the start of the season.

On the 21st we played Gillingham at Prestfield Stadium, drawing 1-1. The team included two trialist's Andy Finnigan and John Williams, both of whom did well. The result was a little disappointing after such a pleasing team performance with plenty of chances created.

Richie Hanlon scored our goal in the first half after good build up play found Paul Taylor in space to deliver a good cross in the danger area. Several YTS boys started the game and all came through well.

On Bank Holiday Monday we entertained Reading. Once again our side was an interesting mixture of senior players, trialists and trainees, and again the outcome was quite an entertaining draw. Richie Hanlon again scored this time arriving late into the box from midfield to score at



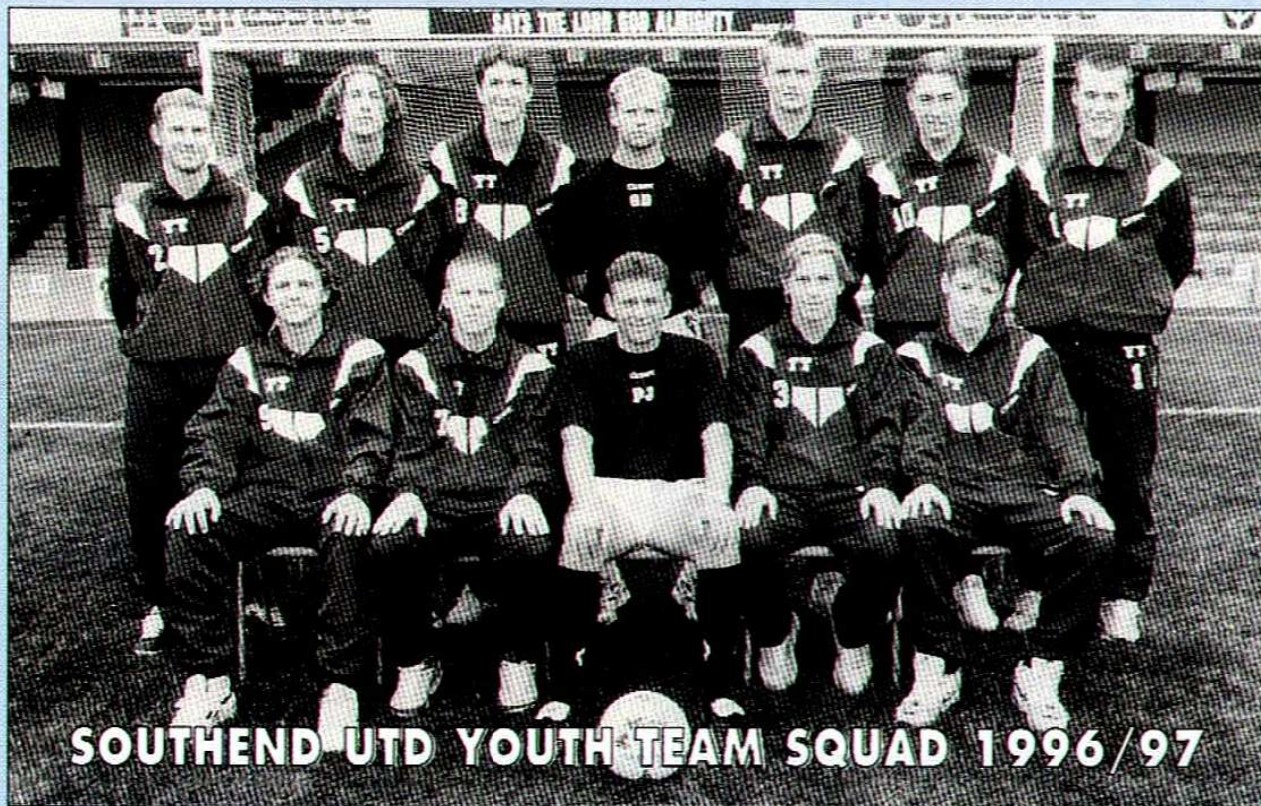
WITH
PETER TREVIVIAN

the far post with a well placed header. With eight of the Reading team able to boost first team experience our youngsters acquitted themselves well and following a scrappy first half display settled down to play some fluent football and create some good chances in the second half. The seniors also gave solid performances and overall both the result and the performance offered some positive aspects which we can take into the training and develop further.

It was also pleasing to see an appreciative crowd on what was a pleasant Bank Holiday Monday.

TEAM: SANSOME, KINERSLEY, JONES, FINNIGAN, FARMER, SUSSEX (CAPT), LEGGATT, TAYLOR, HANLON, WILLIAMS, DYER.

SUBS: PIKE, MORRISH AND DOYLE.



SOUTHEND UTD YOUTH TEAM SQUAD 1996/97

SOUTHEND UNITED F.C. SOUTHEND UNITED F.C. SOUTHEND UNITED F.C. SOUTHEND UNITED F.C. SOUTHEND UNITED F.C.

MEET THE TEAM COACH



If you want to go places, it pays to hire a good coach

That's why Southend United Football Club rely on Supreme Coaches to take them to all their away fixtures. When you set your sights on a place in the Premier League it makes sense to get their 1st-Class.

SUPREME COACHES

Official Team Coach to Southend United Football Club

SUPREME COACHES - EST. 1924

303 LONDON ROAD,
HADLEIGH,
BENFLEET, ESSEX SS7 2BN



ABTA V4373

Tel: 01702 557261/552995

Fax: 01702 554236

SUPREME HOLIDAYS

PARIS • AMSTERDAM *from only*
THE RHINE

£69

- A member of ABTA
- Established over 65 years
- Supreme Supercoaches
- 1,000's of satisfied customers
- Local Joining Points
- Guaranteed against all currency surcharges

FREE COLOUR BROCHURE UPON REQUEST

AUTUMN • CHRISTMAS • SPRING

TEL: 01702 552995



SUPREME HOLIDAYS

303 LONDON ROAD • HADLEIGH • BENFLEET • ESSEX SS7 2BN

Fitness

FEATURE

At the moment the treatment room is very quiet and subdued. Our only major problem at the moment has been Mark Stimson. His injury has now gone on for quite some considerable time. He has been able to play games but not train. Last Friday we took Mark for an MRI Scan (Magnetic Resonance Imaging). This scan shows up all bones, soft tissues and organs in the body, and it takes over an hour to do. At time of writing we have not yet received the results of the scan so we are treating his ankle as we have done over the last couple of weeks. As well as treatment the rehabilitation side of an injury is very important.

First step along that road is to get the ankle joint mobile again. We do this by gentle passive exercises like moving the foot up and down and doing circles. After he has gained full mobility we then start to apply slight resistance. This can be done either by myself applying pressure on the foot or by the player himself sitting down and



JOHN GOWENS

leaning forward using his own body weight as a resistance. From that we move onto more specific exercises, such as the wobble board, running up and down the terraces and also isolating the injured ankle and working on that only.

Andy Thomson who had a groin repair operation last week has come through that successfully. He had numerous things repaired and hopefully this will now cure him of any pain he had in the past. He will hopefully be out no longer than 6 weeks.

HOWAY THE LADS

BLUES

moments

WITH DAVE GOODY

SOUTHEND UNITED F.C. SOUTHEND UNITED F.C. SOUTHEND UNITED F.C. SOUTHEND UNITED F.C. SOUTHEND UNITED F.C.

Northampton Town's Record Victory

You may wonder what Northampton Town's record win has got to do with the history of Southend United. Well, the simple answer to that is that it was achieved against the Blues on 29th December 1909 in a Southern League match. The report in the Northampton Daily Chronicle stated that "there would be a crowd of between nine and ten thousand people present." Southend's team on the day was:- Toone, Cairns, Murray, Bigden, Owens, Emery, Crewes, Wright, King, Sutherland, Brown. The goalkeeper Toone was making his debut for the Blues in the first team, as was the full-back Cairns, both of whom had created a great impression playing against Southampton Reserves on Boxing Day. In order to recreate some of the original atmosphere of the game, the original wording of the match report from the Northampton Daily Chronicle is quoted below. It certainly makes interesting and different reading from the overblown reporting of today's newspapers.

"The teams turned out at 2.35, and Lloyd Davies, who captained the Northampton side, was successful in winning the toss, and kicked away from the town. The visitors' right wing was soon dangerous, but Sutherland was given offside. The visitors continued the attack, and Britten and Dunkley were both applauded for some smart tackling."

"After 20 minutes play, the Cobblers were presented with a goal. Whittaker centred nicely, and after receiving a long forward pass from Lewis, Owens, in trying to clear, put the ball into his own net."

LOOKING BACK AT EVENTS IN THE HISTORY OF SOUTHEND UNITED

"Freeman centred to Walden, who put the ball just inside the net, Whittaker running up and kicking further in. Freeman again centred, and Lewis shot what would have been a good Rugby goal."

Half-Time:

Northampton Town 5 - 0 Southend United

"Southend played up a bit better just now, and Crewes gave Britten a warm time. The goalie, however, kept his charge intact."

"Thorpe made a magnificent save from Clewes, the goalie jumping up into the air and throwing away over the heads of the players. Dunkley had hard lines in not scoring from a corner, for he missed by inches only."

"It was now Southend's turn to score, and from a free kick Brown passed over to Sutherland, who gave Thorpe no chance in saving his shot."

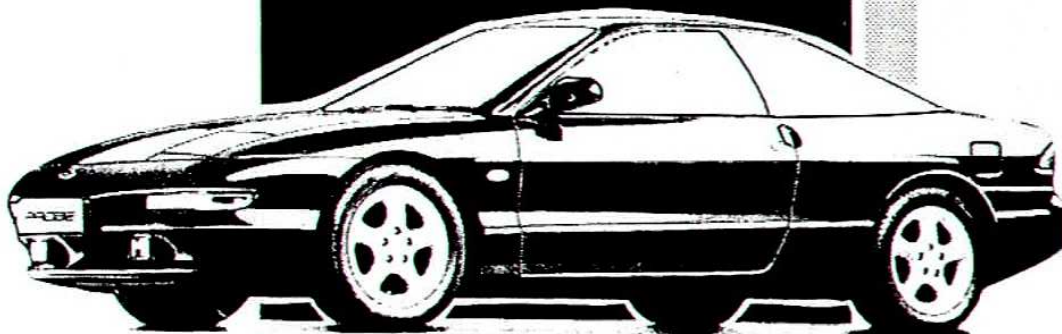
Final Score:

Northampton Town 11 - 1 Southend United

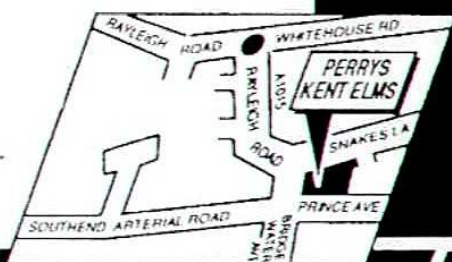
"On the visiting side, Toone can be commiserated with on being so heavily beaten in his first essay in big football, but he accomplished many smart things. Brown was the best opposing forward, but, with the exception of Owens, the defence was wretchedly weak."

Let's hope that this season the Blues goalkeepers can "accomplish many smart things" and our defence are never "wretchedly weak!!"

PERRYS



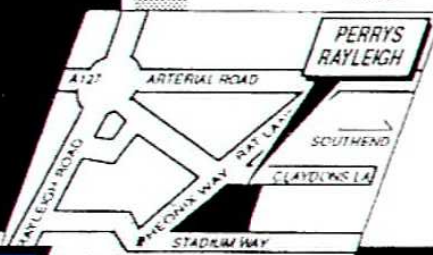
New Car Sales
Used Car Sales
Commercials
Servicing
Hire
Bodyshop
Rapidfit
Parts



KENT ELMS CORNER
PRINCE AVENUE, SOUTHEND
0268 775544

PERRYS

ESTABLISHED 1912



STADIUM WAY
RAYLEIGH
0268 775544

We put people first!



MARKETING matters

Match Sponsorship

Why not use Southend United as your sales and marketing platform by sponsoring a 1st Division League or Cup match this season?

Match Sponsorship is an ideal way to entertain clients and staff to an excellent day out, while raising the profile and awareness of your Company.

Your package will include:

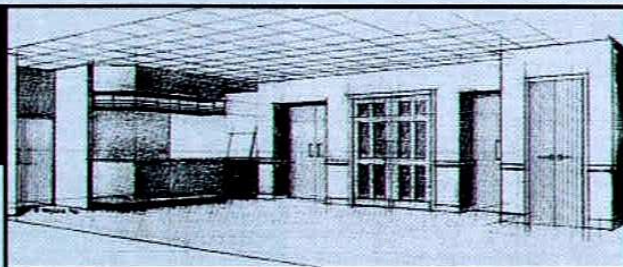
- Double hospitality suite for 16 people.
- Buffet for 16 people.
- Bar facility.
- Full waitress service.
- Car park passes.
- TV/Teletext.
- Presentation of a souvenir signed football.
- Complimentary matchday programmes.
- Full page advertisement in the matchday programme.
- Acknowledgement of your support on the Electronic Scoreboard.
- Optional champagne presentation of Man of the Match.

Associate Match Sponsorship packages are also available

100 Executive Club Membership

This newly formed Executive Club offers a package incorporating designated seating, a buffet prior to the match and half time refreshments plus exclusive use of the new 100 Club Lounge and Bar.

This impressive new facility is now completed and must be seen to be appreciated. It will be fully operational for this match but for your exclusive preview visit contact our **Commercial Department on: 01702 30 40 50.**



Your package will include:

- Seat in designated area for all Nationwide League Matches.
- Exclusive use of the new 100 Club Lounge and Bar with security card entrance.
- Player attendance after each match
- Buffet prior to the match.
- Half time refreshments.
- Match day magazine.
- Executive Tie.
- Priority for special match ticket purchase.

ROOTS HALL MARKET

OPEN EVERY THURSDAY 8.00am - 3.00pm

Loads of Bargains • 100's of Stalls • Far Post Bar open for food and drink

THE BEST MARKET IN THE SOUTH EAST

Also Boot Fair every - Tuesday, Saturday & Sunday

SAFETY matters

WITH GEORGE WRIGHT

Every club has to have an official safety policy statement and S.U.F.C. is no exception, so in the first of his articles, Safety Officer, George Wright publishes the official statement as authorised by the Chairmans & Board of Directors:-

SOUTHEND UNITED FOOTBALL CLUB SAFETY POLICY STATEMENT

Southend United Football Club undertakes that all activities which take place at Roots Hall are conducted in a way that ensures, as far as is reasonably practicable, that the safety of everyone attending the ground is assured.

Southend United Football Club, as holders of a general Safety Certificate periodically issued by the Essex County Council, acknowledge the primary responsibility to ensure the reasonable safety of all persons attending the ground.

All employees from the Directors and Senior Management through to all matchday staff have a duty to monitor this policy and report any deficiencies to their supervisors, in order that any necessary modification to the policy can be considered. Senior Management will liaise with the Essex County Council Football Liaison Advisory Group and any other body which has an input into the safety of spectators at the ground. The Senior Management, in co-operation with the Advisory Group will produce the Clubs contingency plans which can be implemented in the event of a large scale emergency.

The organisation to implement the safety policy is directed during regulated events by the Safety Officer who has, on behalf of the Club overall responsibility for the safety of all persons who enter the ground during activities covered by the Safety Certificate and who are in compliance with the Ground Regulations. He will report directly to the Chief Executive. The overall Safety Policy of the Club rests with the Chairman and Board of Directors who will seek to implement the policy through the Chief Executive.

Victor Jobson
Chairman - Southend United Football Club Limited
August 1996

In future articles George will deal with various matters affecting Supporters and their safety which will hopefully not only prove interesting but informative in respect of the safety of all attending Roots Hall.

SOUTHEND UNITED F.C. SOUTHEND UNITED F.C.

THE STORE FOR ALL SEASONS!

CALOR Gas

Convenience
when and where
you need it!

**ERNEST
DOE
& SONS LTD**

ALWAYS SOMETHING
ON SPECIAL OFFER!

Country Collection

A SUPERB RANGE
OF OUTDOOR CLOTHING

WEIR POND ROAD, ROCHFORD

Tel : 01702 544562

Open : Mon-Fri 8am - 5.30pm Most Saturdays 8am - 4pm

BRANCHES THROUGHOUT EAST ANGLIA

Visit The Showroom for...

GARDEN TOOLS * WORKSHOP TOOLS
CLOTHING and FOOTWEAR
WELDERS * COMPRESSORS
PRESSURE WASHERS * POWER TOOLS
SECURITY and SAFETY ITEMS IN STOCK

TOP NAMES, TOP VALUE!

**What if
a young Brazilian
forward wanted to sign
for your team, but the
club couldn't afford him ?**




Nationwide Savings :

So you stepped forward with a brown envelope stuffed with cash and secured the transfer. You'd be branded a hero, the fans would carry you shoulder high to the Kebab van and they'd probably even name the home stand after you. All because you had a flexible savings account that gave you instant access to your money. To find out more about Nationwide savings accounts just give us a call. All the best for the season!

Call free on: **0800 30 20 10** quoting ref: FB09

or visit our football site on
<http://www.nationwide.co.uk>

 **In tune with people**



THE BUILDING SOCIETY.



BLUES SOCCERLINE



FOR THE LATEST DAILY
INFORMATION AND UPDATES
ON WHAT'S HAPPENING
AT ROOTS HALL TELEPHONE:

 **0839 66 44 44**

CALLS COST 36P PER MINUTE CHEAP RATE,
48P PER MINUTE PEAK RATE

FOR ALL TICKET INFORMATION
TELEPHONE THE TICKET OFFICE ON
(01702) 304090 OR
BLUES FAXLINE **0336 418177**

SOUTHEND UNITED



**TELETEXT /
INFORMATION SERVICE**

on TELEWEST CABLE TV
Channel 17 • Page 808

for all the latest News,
Updates and Information
from Roots Hall

Matchday MASCOTS

Make a child's dream come true. Any youngster can become a Mascot for Southend United at their favourite fixture (subject to availability).

A member of our Matchday Staff will look after the Mascot for the afternoon and show them around before they change into their strip and lead the team out onto the pitch.

Your package will include:

- 3 seats in prime seating area in the Main Stand.
- Pre match refreshments in the Players Lounge.
- Full replica Southend United kit.
- Lead out the team.
- Centre circle pre kick off photo opportunity.

- Opportunity to be photographed with favourite player.
- Photo and write up in matchday programme.
- Recognition as mascot on PA system and on scoreboard.

To become a Matchday Mascot call the
Commercial Department on: 01702 30 40 50

TODAY'S MASCOT

For today's game we welcome Aaron Vickery as our match mascot.

Aaron, age 8, goes to Great Wakering School and lists his hobbies as Football and Swimming. His favourite player is Simon Royce.



ABOVE: Andy Rammell takes on Ivano Bonetti

BELOW: Paul Byrne beats Gary Stevens to the ball



SOUTHERN
FOOTBALL
1906

 **National**

PHOTOGRAPHY



VE
TRANME
17TH AU



THE GROSS



P L A Y I N G

D UNITED D
L CLUB
1997

vide FOOTBALL LEAGUE

BY ANDÉ WARD



SUS
E ROVERS
UST 1996



ENOR GROUP

T H E B L U E S



ABOVE: Keith Dublin tracks Bonetti

BELOW: Andy Rammell celebrates our 1st goal of the season



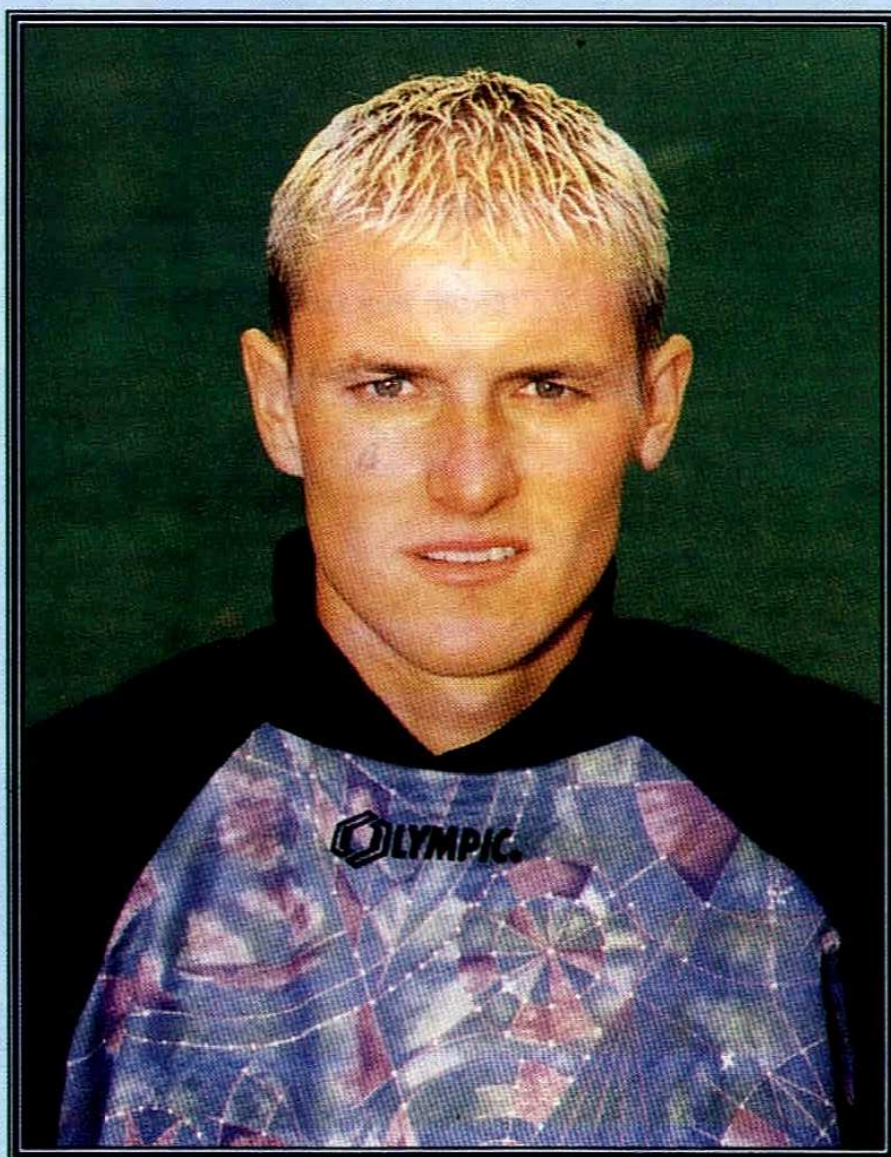
Player

FOCUS

Southend United's Simon Royce didn't win the First Division Goalkeeper of the Year award last year. I am not sure how. In Royce's first full season Southend's player of the year often kept the Blues in games or saved them a point or two. He was the most consistent goalkeeper I saw in my travels last year. He started this year as though he meant to continue his improvement. Anyone at this week's match at Fratton Park would remember the amazing "pin ball" sequence within the penalty area - the ball fizzing around the Southend goal and Royce flinging himself in seemingly every direction to stop the ball crossing the line.

Ability, I guess, is the key to being a good goalkeeper - Royce most certainly is that. Speculation that Simon was to leave Roots Hall for a Premiership Club was worrying but hardly surprising. It seems a long time ago since that night at Roots Hall when Southend, struggling against relegation, played premiership bound West Ham. I am not one for statistics and my memory doesn't often help me too much,

but Royce kept the Blues in the match with a series of stunning saves. There must be something about the Hammers that Royce likes - remember back to the ultimately disastrous defeat at Upton Park in the third round of the Cup this year. Some of the certain goals that Royce prevented were breathtaking. Goal-keeping heroics are like



SIMON ROYCE - Unlucky not to win the First Division Goalkeeper of the Year award last season.

some joke - you have to be there. At times Royce was keeping the scoreline respectable. It is always nice after a match when the journalists or supporters from the opposing club are complimentary about a Blue's player - they certainly were that day.

It is easy to say all of the above, easy to compliment an excellent player, but some say it is their job to stop the ball from crossing the line "that's what he is there for". Some might say "true". The fact is that I can't remember a "blunder" by Royce last season - the fact is that he makes two or three top class saves a game. Watch the match today - see if I'm wrong.

You can hear Robin Chipperfield on B.B.C Essex this afternoon and also on Tuesday when Southend play Fulham.



YOU CAN HEAR ROBIN CHIPPERFIELD
THIS AFTERNOON ON
BBC ESSEX (95.3 FM, 1530MW)

CANON
BROTHER

OLIVETTI

PANASONIC

RICOH



THE GROSVENOR GROUP

CAPITAL EQUIPMENT

SERVICING & SUPPLIERS OF PHOTOCOPIES (COLOUR & BLACK/WHITE)
FACSIMILE MACHINES & TELEPHONE SYSTEMS,
CLOSED CIRCUIT SURVEILLANCE SYSTEMS

COMMERCIAL CONTRACTS

SUPPLY & INSTALLATION OF CARPETS, TILES, VINYL FLOORING &
VERTICAL BLINDS

FACILITIES MANAGEMENT

RISKS ASSESSMENTS, PORTABLE APPLIANCE TESTING,
HEALTH & SAFETY CONSULTANCY

GROSVENOR CORPORATE CONSULTANTS LTD

90 RAINHAM ROAD, CHERRY TREE, RAINHAM, ESSEX RM3 7RJ

TEL: 01708 557407 FAX: 01708 557412

OLIVETTI

PANASONIC

RICOH

BROTHER
CANON

Ones

WRITE UP

WITH NICK ALLIKER

MAN CITY SHOCKER

Manchester City stunned the First Division world on Tuesday, when they parted company with Manager Alan Ball.

They thanked him for his efforts at the club.

City only managed seven wins in the Premiership last year, and have struggled in their opening games in Division One - managing just three points in the first three games.

On the field, Bolton Wanderers are looking to go straight back into the Premiership, as they head the table after the second soccer weekend.

To be fair, they have played one more game than the rest of the top-of-the-table challengers, but with seven points, the Lancashire side are just ahead of Barnsley, Wolves, QPR and Stoke.

Nathan Blake blagged a brace for Wanderers' in their 3-1 win over Norwich. Last season Blake hit just one goal all year after his 1.5 million pound move from Sheffield United. Michael Johansen was the other Bolton goal-getter, while Darren Eadie cracked the Canaries consolation.

Barnsley moved into second spot, with a 3-1 SKY win over Huddersfield. Star of the Sunday show, was Client Marcelle. He's now off playing for Trinidad in a World Cup qualifer, but before he left, he wooed the Oakwell crowd with a stunning goal. The 27 year old signed from Felguiras in Portugal, grabbed the third.

Earlier, a 20 yard effort from Neil Thompson put Barnsley in front, before Tom Cowan's long throw-in went straight in for the equalizer. Barnsley went back in front on 73, then enter the Calypso king from Trinidad.

Queens Park Rangers beat Portsmouth on Friday, while Wolves did the bizz over Bradford 24 hours later. Stoke City the only other 100 percent side edged Manchester 2-1.

An amazing match at Brammell Lane where Sheffield United and Birmingham City drew 4-4. Ex-Southend star Jonathon Hunt hitting the late leveller for Brum.

Elsewhere, today's visitors Swindon Town locked it level with Port Vale. They finished 1-1. It was the same scoreline at the Valley where Charlton drew with West Brom.

Crystal Palace grabbed their first win of the season at home to Oldham. Dougie Freedman set up two goals for Palace, but was then substituted. A decision Freedman was most unhappy with. David Hopkin hit two of the Palace goals, Bruce Dyer the other. Sean McCarthy pulled one back for Oldham, but it wasn't enough.

An amazing match at Portman Road, which Ipswich won 5-2 against Reading, and the Royals had their keeper Bobby Mihaylov sent off at the interval.

THE AMERICAN STYLE HAND CAR WASH SYSTEM

RAPID CAR CLEANING CO.

★
**DON'T WASTE ANOTHER WEEKEND
CLEANING YOUR CAR**

**LET US TAKE THE TROUBLE FOR YOU AND
IN 10 MINUTES YOUR CAR WILL BE SPICK AND SPAN!**

Full Valet Service from £35.00

Full Interior & Exterior Wash £8.00	Full Exterior Wash from £5.50
--	--

NO NEED TO BOOK

OPEN

8.00 a.m. - 6.00 p.m.

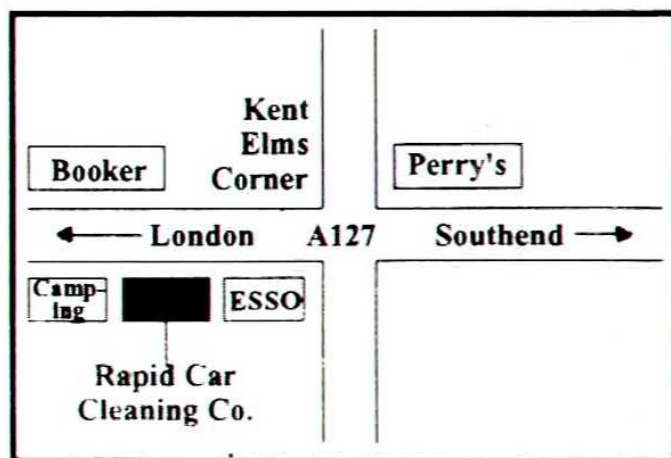
MON - SAT

10.00 a.m. - 3.00 p.m.

SUNDAY

**116 Arterial Road
Southend-on-Sea
Essex**

**Telephone:
01702 528436**



A-Z of SOUTHEND UTD

WITH RICHARD GODWIN

C Southend's cup history can easily be split into three main categories, although in none of those can it be said that we have achieved great success.

F.A. CUP

Blues first ever match in this competition was on 21st September 1907 when we entertained East Ham in the 1st Qualifying Round, and a crowd of 3,000 watched as Blues were winners by 3 goals to nil. Eventually we were knocked out by Carlisle United away. In all we have played 107 F.A. Cup games at home, winning 67, only losing 24 and drawing the remaining 16. Away from home we have played 114 games, but only victorious in 39. We lost 55 and drew 20. The total number of goals we have scored in this competition is 419 conceding 306. The furthest we have progressed is to reach the fifth round and we did that on four occasions, 1926, 1952, 1976 and more recently in 1993 when we lost at Sheffield Wednesday. We have met 111 different clubs but the most frequent is Watford who we have played 11 times. We have a remarkable record against Non-League clubs here at home by playing them 19 times, winning 17 and no defeats during which time we have scored no fewer than 82 goals, conceding just 7. Our best win in the Cup was the 10 - 1 win at home to non-League Golders Green in 1934 and this was repeated in 1968 against Brentwood Town. No team has ever scored more than six against Blues either at home or away.

FOOTBALL LEAGUE CUP

Although the name and sponsor has changed over the years, our luck in this competition has always been less than

CUP CAMPAIGNS

satisfactory. We have not yet progressed beyond the 3rd Round and that has been done five times. Of the 90 games played up to the start on this season, we have only won a third of them and even failed to score in a third of them. Of the 37 clubs we have met so far, our best win was away at Bournemouth in August 1968 where we won 6 goals to one. Many fans reading this will remember our worst defeat which came at Crystal Palace when Mark Bright and Ian Wright each scored hat-tricks in the eight goal rout in 1990. The last time we reached the third round was in October 1987 when we lost 0-1 at Portman Road where Graham Harbey hit a first half winner.

OTHER CUPS

Amongst the minor cup competitions we have entered are the Anglo-Italian Cup which gave Blues their first trip onto foreign soil for competitive football. Our first game abroad was against AC Fiorentina where we lost 0-3 in front of just 2,200 fans. The Associate Members Cup, and its' subsequent names also provided Blues with a 10-1 scoreline when we beat Aldershot and the same competition also saw Blues attract their lowest home cup attendance when just 683 fans turned up for the Freight Rover Trophy game with Northampton Town who beat us fair and square by 3 goals to one. The total number of fans to watch Southend's home cup games now amounts to 1,266,275 for the 153 games played which gives us an average of 8,276, which is 1,000 better than our home LEAGUE average.

Southend

ON SUNDAY

FIRST for News
FIRST for Views
FIRST for Sport



For news of the Blues home and away games to the comprehensive coverage of local semi-professional and amateur matches - you can't fail to score a winner with

SOUTHEND ON SUNDAY

Why wait until Monday
Read it all on Sunday

25p

PLACE A REGULAR ORDER NOW
WITH YOUR LOCAL NEWSAGENT

Quiz ?

PAGE

- 1) NAME THREE POST WAR SOUTHEND MANAGERS WHO HAVE REPRESENTED THEIR COUNTRIES AT FULL INTERNATIONAL LEVEL ?
- 2) WHICH TWO FORMER BLUES BOSSES HAVE ALSO MANAGED TORQUAY UNITED ?
- 3) WHICH TWO FORMER TOTTENHAM PLAYERS MANAGED SWINDON IN THE EARLY SEVENTIES ?
- 4) WHO DID OSSIE ARDILES LEAVE SWINDON TO MANAGE IN 1991 ?
- 5) WHO LEFT SWINDON TOWN'S HOT SEAT TO MANAGE WEST HAM IN 1989 ?

WHO IS IT ?

- 1) I MADE MY LEAGUE DEBUT FOR CARLISLE UNITED.
- 2) I'VE HAD TWO SPELLS IN CANADA WITH VANCOUVER WHITECAPS.
- 3) I'VE BEEN ON THE PLAYING STAFF OF MANCHESTER UNITED, EVERTON AND LIVERPOOL.
- 4) I'VE SCORED 9 GOALS FOR ENGLAND.
- 5) I'M CURRENTLY A VITAL MEMBER OF KEVIN KEEGAN'S NEWCASTLE SQUAD.



TEAM TANGLES ?

IM BIG IN MY CHART

- WHO IS IT? PETER BEARDSLEY TEAM TANGLES? BIRMINGHAM CITY
- 1) BOBBY MOORE, PETER TAYLOR AND RONNIE WHELAN 2) DAVE WEBB AND DAVE SMITH
 - 3) DAVE MACKAY AND LES ALLEN 4) NEWCASTLE UNITED 5) LOU MACARI.

ANSWERS

Buxton *breezes in*

WITH ROGER BUXTON
"SPORTS EDITOR ESSEX FM & BREEZE"

Back in the late 60's Southend United made a great run for promotion under Manager Ernie Shepherd. I don't remember the exact equation but we needed a small number of points from our final games to go up to Division Three. In the event we gained an even smaller number of points and didn't make it. So confident were the club and all its fans that there were banners all around the town saying "Don't forget the Promotion Dance at the Kursaal".

Sadly the banners had to come down and the promotion dance forgotten. The final game of the season was away to Southport. With a bevy of fans I paid the £10.00, or was it £20.00.. to fly with the team to Blackpool..and then on to the game.

We had lunch at a Blackpool Hotel and then the strange experience of watching a league match from behind a rope on the touchline...as just a few weeks before Southport's main stand had been raised to the ground by fire.

Despite all the efforts of Mel Slack in mid-field and Derek Woodley on the right wing it was Southport who won 1-0. Had we won it would have been promotion. Defeat at the last gasp meant in the end nothing to show for a brilliant season.

We flew home to Southend in time for me to take a girl friend to the Odean Cinema to end a memorable day when things didn't quite go our way.

But there is one other incident on that day worth recalling. While us fans were sad...the players were devastated that all their efforts had come to nought.

Arriving at Southend Airport in the early

evening with promotion now destroyed I walked across the tarmac with Blues defender Tony Bentley. As we approached the airport building a raucous shout from the observation roof rent the air. "Up the Blues".

"Who's that bloody idiot", said Tony Bentley. To which I replied "My Father".

Yes, good old dad had come to pick me up from the Airport and the only way he could think of picking up the team's spirits was a shout of "Up the Blues". It may have seemed inappropriate at a time when promotion has just been lost...but the important thing was that despite that tremendous disappointment the team did live to fight another day.

Some years later I again flew into Southend Airport with the team after we had won promotion at Bury under David Webb.

What a turn out there was at the airport that night. You couldn't move as the team were mobbed by delighted fans who wanted to share their joy with the team. Sadly Dad was no longer with us to enjoy that return to Southend Airport.

The reason for this rather melancholy tale is that at a time when Southend have made a disappointing start to the season its up to us to get behind the team.

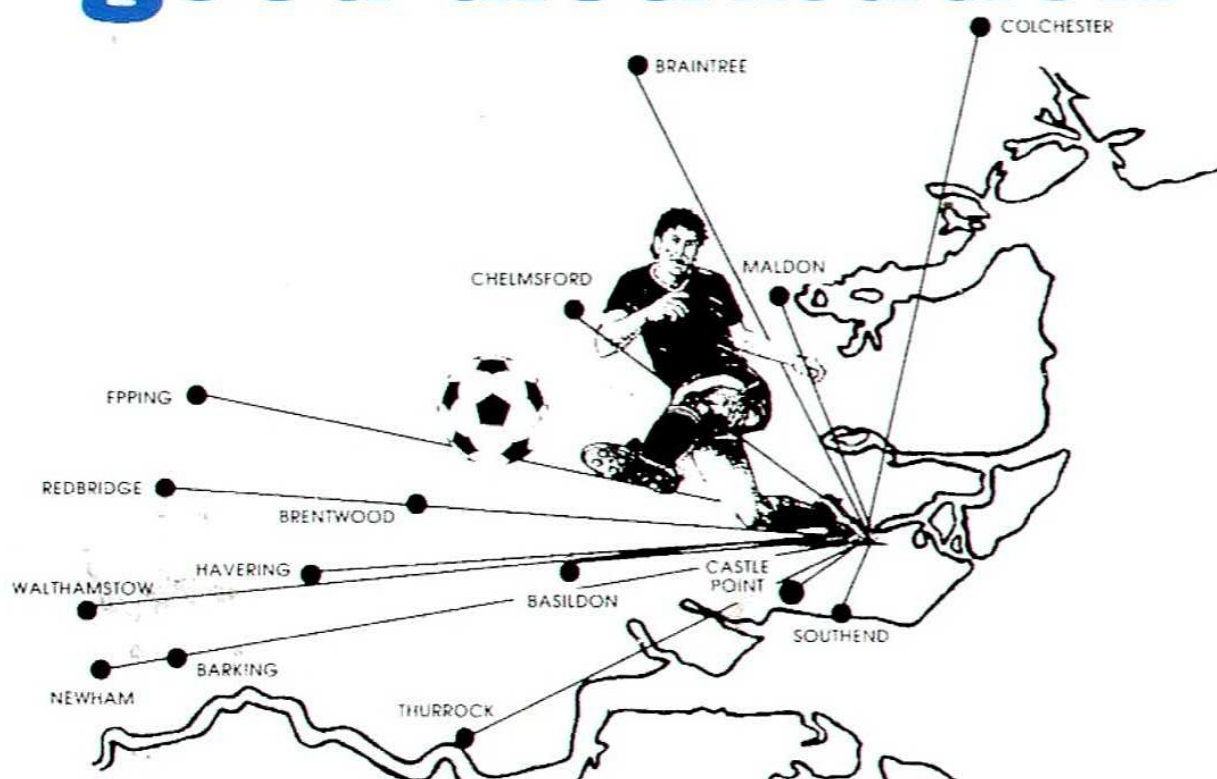
A good cheer and a lot of verbal support from beyond the touchline will lift our boys and we hope give them that extra edge to win their first home game of the season against Swindon Town this afternoon.

Remember Southend United are not alone. You are with them.

UP THE BLUES.

SOUTHEND UNITED F.C. SOUTHEND UNITED F.C. SOUTHEND UNITED F.C. SOUTHEND UNITED F.C. SOUTHEND UNITED F.C.

Any good manager knows the key to success is to have good distribution



**14 different editions delivered to
695,000 homes throughout Essex
and East London every week**

**Yellow
Advertiser**

*The County's
Premier Newspaper*

Telephone 01268 522722

Nationwide and The Football League – A winning team –

Nationwide Building Society is delighted to be sponsoring The Football League and is proud to be associated with the national game. Millions of people around the country enjoy League games, with an increasing number of families attending matches.

Similarly, Nationwide has a relationship with many households in the UK – around one in four. It looks after the financial needs of over seven million people and is the UK's largest building society intending to remain customer owned, committed to putting customers first.

Nationwide is an organisation with strong roots in the community and we are always looking for new ways to promote awareness of the benefits we can offer and to strengthen relationships with customers even further. With 72 league

clubs and 630 Nationwide branches throughout England and Wales, we are looking forward to working with The League and its member clubs to support community initiatives and forge even closer links with local people. Wherever you find a football team you'll find a Nationwide team.

Nationwide's philosophy is to be "in tune with people", and we believe that the help we can give in investing in football's future will further demonstrate this and underline our general commitment to meeting customers' needs.

We would like to take
this opportunity to wish your
club a successful season.



Southend United Club Shops

**NOW IN
STOCK**

Victoria Circus Tel: 01702 601351

Roots Hall Tel: 01702 304140

**NOW IN
STOCK**

SUFC 1995/96 Season Video £13.99

Big Banner Scarves £9.99

Large Bath Towels £9.99

1996/97 Team Kits • The "Official" 95/96 Season Review
Early Season offer prices till 1st September

On this day in history

WITH RICHARD GODWIN

BLUES RESULTS ON THIS DAY IN THE PAST

31ST AUGUST

1927	Bournemouth & Boscombe Ath	A	3-2	Hick (2), Bailey.
1931	Coventry City	A	2-0	Crompton, Baron.
1935	Bournemouth & Boscombe Ath	H	3-3	Stevens (2), Firth.
1938	Torquay United	H	1-1	Smirk.
1946	Walsall	H	3-1	Lane (2), Dudley.
1948	Exeter City	H	0-0	...
1955	Reading	A	1-4	Hollis.
1957	Queens Park Rangers	H	6-0	McCory (2), Crossan (2) McGuigan, Hollis.
1959	Queens Park Rangers	A	0-0	...
1963	Wrexham	A	3-1	Woodley, Beesley, Jones.
1964	Queens Park Rangers	H	0-0	...
1968	Newport County	A	1-4	Bentley.
1973	Watford	H	2-3	Booth, Johnson.T.
1991	Leicester City	H	1-2	Martin.

FOOTBALL LEAGUE CUP ROUND 1

1966	Gillingham	A	0-2	...
1939	Played away at Clapton Orient, drew 0-0, but League suspended due to War.			



GET ALL THE LATEST
NEWS ON THE

F.A. COMPETITIONS NEWSLINE



Updated daily with Draws, Match Dates, Change of Venues, Kick-off Times and Results
for the FA Cup Sponsored by Littlewoods, FA Umbro Trophy, FA Carlsberg Vase,
UK Living FA Women's Cup, FA Sunday Cup and FA Youth Cup.
Cup draws on Monday after 12.00 noon and Saturday evening results after 7.30pm.

PHONE NOW
0891 66 44 33

Presented by Tony Incenzo

Marketed by Sportslines on 01386 47302 or 0831 464517

Calls cost 39p per minute cheap rate and 49p per minute at all other times.
Call costing correct at time of going to press (June 1996).



WHAT'S THE SCORE?

Get the facts about drugs

For a free fact pack about drugs and
solvents, drop a line today to:

"What's the Score?"

South Essex Health Authority

FREEPOST RM1006

Union Lane, Rochford, SS4 1BR

You won't need a stamp, but don't forget to
print your name and address, so that we can
mail your free fact pack to you without delay.



Caught.

Ball watching!

The official ball supplier to:



MAGNATROL

- THE ELECTRICIANS -

(01702) 206613

- ***ELECTRICAL INSTALLATIONS***
- ***EMERGENCY LIGHTING***
- ***FIRE ALARMS***
- ***CCTV SYSTEMS***
- ***PUBLIC ADDRESS***
- ***FLOODLIGHTING***



Always on the ball!



"He shoots!..he

**...get the full picture
get connected.**

0500 470 480



TELEWEST
COMMUNICATIONS



get connected

Here WE GO

FULHAM F.C. TUESDAY SEPTEMBER 3rd

Ground:	Craven Cottage	
Ticket Prices:	Seats	£11.50
	Concessions	£6.00
	Terraces	£8.00
	Concessions	£4.00

Ticket Info. No: (0171) 736 6561

Matchday Magazine: £1.50

BLUES AWAY

Coaches Depart

Shoebury Station	4.00pm
White Horse	4.15pm
Golden Lion	4.30pm
Kent Elms Corner	4.40pm
Rayleigh Weir	4.45pm
Jolly Cricketers	4.50pm
Fortune of War	4.55pm

Fare: £6

Bookings can be made by ringing Paul
Holland on (01702) 293121 (After 6.30pm)

BY ROAD & RAILWAY

Road: Take A13/A127 into Central London. Take South Circular (A205) and follow Putney signs (A219), cross the bridge and follow Hammersmith signs for ½ a mile. Turn left into Bishops Park Road then right at the end for ground

Nearest Railway Station: Fulham

CHARLTON ATHLETIC TUESDAY SEPTEMBER 10th

Ground:	The Valley	
Ticket Prices:	Adult	£13
	Concessions	£6
	Junior	£4

Ticket Office No: (0181) 858 5888

Matchday Magazine: £1.50

BLUES AWAY

Coaches Depart

Shoebury Station	4.00pm
White Horse	4.15pm
Golden Lion	4.30pm
Kent Elms Corner	4.40pm
Rayleigh Weir	4.45pm
Jolly Cricketers	4.50pm
Fortune of War	4.55pm

Fare: £6

Bookings can be made by ringing Paul
Holland on (01702) 293121 (After 6.30pm)

BY ROAD & RAILWAY

Road: From M25 take junction 2 (A2 London bound) and follow until road becomes A102 (M). Take the turning marked "Woolwich Ferry" and turn right along A206 Woolwich Road. This route takes you into Charlton.

Nearest Railway Station: Charlton

Around THE HALL

Regardless of the rather underwhelming start on the pitch, problems relating to building works have also caused difficulties off it. So, this column is devoted first of all to apologize to any and all spectators who feel that they have been affected by the early season problems we have been grappling with.

Essentially, the problem lies in the short close season available for building works generally and the desire not to have to close any areas when there are games going on. Thus, in the East Stand, Blue, Yellow and Red sections, the effects of the major project of the summer have had an initial effect. The initial plus of course is the installation of modern toilets for both sexes replacing those of the 1950's vintage. The minus has been to date that the planned Tea-Bar and Ground Floor Bar are behind in construction. A Season Ticket holder phoned this writer in the week to advise me that the Stadium Catering Manager had informed him that the catering facilities had "been forgotten". I am pleased to advise anyone that this is not the case and in due course, facilities modern and improved all-round will be available.

On the first floor of the East Stand in that area, the new 100 Club Facility nears completion. On the South West corners, the facility for a 75 Club is in place and the older bar on the West Side is being re-furbished to encompass another 100 Club. Although the club, via this column last year advised of its plans for these types of facilities many spectators are apparently unclear as to what the policy is. Essentially and in line with most clubs at our level and above, we are seeking to provide modern facilities for spectators but within the constraints of an old stadium, it is

not possible to effectively provide those generally. Last year we had complaints from West Siders that too many people were seeking to use the bar facility and that it was not possible to have all who wished to be, served. Now, when the facility memberships are established, entry will be restricted to those enrolling who will be secured in their use of the facility and in better surroundings and comfort.

Of course, everyone, including the club would have wished for all up-gradings to be completed prior to the start of the season but building takes time and the need to replace the entire drainage system at the East Stand side, which no-one notices now it works properly, took a good slice of time of the planned programme.

Thus we understand the irritability of our very loyal Supporters because of the changes and the fact that all is not in place. We crave your indulgence for a short while yet on the basis that everything being undertaken is on the premis of providing better for our customers to enable them to get more from their watching of football in the modern manner. It's a far cry from dodging the dog-dirt and open urinals, on the West Bank, for example, of just a few short years ago. Hopefully that which has been undertaken will secure your support and if not that at least understanding. If you feel the former can be given and you would like to join one of the new facilities then Anne-Marie Clark on 01702-304050 will be pleased to assist you.

CENTRE *of excellence*

WITH PETER TREVIVIAN

With the summer break almost over and the youngsters returning from their lengthy school holidays, the time approaches when we will again be starting up our Centre of Excellence at the Boots and Laces Training Ground.

With Peter Taylors' departure I have been given the responsibility to guide the Clubs Centre as it's Director and hopefully I can build on the solid foundation Peter put in place.

Quality coaching is vital in the development of young players,

so the staff at the Centre will be working hard to ensure that the youngsters increase their knowledge, develop their skills and enjoy the hour each week at the Centre.

The Centre's Football games start on the 22nd September, which means there is three weeks to get the youngsters development under way. I will be reporting back to you at regular times to update you with all the Centre of Excellence News.

SOUTHEND UNITED F.C. SOUTHEND UNITED F.C. SOUTHEND UNITED F.C.



National Power Plc
Fort Road, Tilbury, Essex
RM18 8UJ

At Tilbury, National Power operates the largest power station in Essex and as well as putting power into industry and homes we are now helping to put a **SPARK** into football.

Excellence and Youth are two worthy objectives of our support - the **CENTRE OF EXCELLENCE** launched by Southend United Football Club combines both of these - and National Power - Tilbury is very pleased to sponsor this venture for a further year.

We wish all the staff and young footballers every success and look forward to many **ELECTRIFYING** performances.

National Power - The Power To Perform At Your Command

In the COMMUNITY

FRANKIE BANKS

Welcome everyone to Roots Hall the Home of the Blues. The summer has seen us very busy with soccer schools we have been running. There has'nt been time really for anything else, now they are out of the way we can get back to a bit of sanity. We have a very busy schools programme to account for as well as an unemployment scheme, an all girls football/ladies soccer coaching course (these are being funded by Basildon Council). Apart from the schools programme the other two projects are completely new territories to us. They are going to be a challenge to us but one I feel we can cope with quite adequately. We are looking forward to it with some relish. My thanks must go out to all the people who coached or assisted on the soccer schools. They are as follows:- Ray Scott - Gary Piggott - John Threadgold - Harry Johnson - Alan Reade - Neville Hickton - Gary Kiff - Derek Robinson - Nicholas Bunney - Tony Kirby - Gary Brown - Damien Coleby and Ben Burman. Without all these gentlemen's expertise none of this would have taken place.

We are planning to hold several emergency 1st aid courses in the near future. We need at least ten people to come on the course. The cost per person is £6.00 and lasts for three

hours in which time you will be instructed in the procedure of perhaps saving someones life. The certificate you are awarded has a validity date of three years. If you are interested contact the community on Telephone Number 01702 341351.

Alf Bilby a very good friend of mine who has done a considerable amount of work with youngsters over the past twenty years is being given by Thundersley School/Parents a fun afternoon come soccer extravaganza. This is to commemorate Alf's retirement as caretaker of the school. The afternoon will take place at the school on Sunday the 1st September starting at 1-00 PM. Try and get along if you possible can to support a man who without a doubt fully deserves all the accolades that are said about him.

Finally our Saturday team to-day are Woodham Radars U/10A - their Manager is John Norwood. We hope you enjoy your day and the match.

Until we meet again.

God Bless.

Frankie Banks.

Sponsoring S.U.F.C. Community/Creche

ROURKES T.V.
Kiln Road, Thundersley

Geoff Bray

Sales, Service, Parts, Accessories, Network Q
Approved Fleet Specialist
Motability & Master Hire Leasing

Junior BLUES

Welcome to all the Junior Blues and Junior Youth to the seasons second home match. My name is Ray Scott and I am Assistant Community Officer and some of you will know me from the Soccer Schools that we run.

The Junior Blues and Junior Youth has now been taken over by The Community Office and we will be arranging hospitality days that will be supervised by a qualified F.A.

Coach. If any of you would like more information, please ring me on Southend (01702) 341351.

"UP THE BLUES"

Bye for now

SCOTTY

N.B. I apologize to all you kids for the delay in sending out your memberships - it's been a little hectic with the Soccer School.

N.J. MORGAN

SIGNS & SIGNWRITING

01277 230060

**VINYL LETTERING
BANNERS
VEHICLE GRAPHICS
MAGNETIC SIGNS
SHOP FASCIA
SCREENPRINTING
TRADITIONAL
SIGNWRITING &
GILDING**

PIPPS HILL Country Club

Cranes Farm Road, Basildon,
Essex Tel: 01268 271571

Gymnasium, Swimming
Pool, Squash, Aerobics
Licensed Bars, Evening
Entertainment, Function
Rooms for hire.

Please produce this advert for
FREE Social Membership

Boots & Laces

SOUTHEND'S
★ PREMIER ★
CABARET NIGHT ●

Eastern Avenue,
Southend-on-Sea, Essex
Telephone: 01702 462111

AIRPORT HOTEL

The ideal venue for your
Dinner and Dance, Wedding
Reception, Conference or Party

"We can cater for up to
150/200 people"

Other facilities include
65 Tastefully decorated bedrooms,
Brasserie Restaurant,
Lunchtime Bar Foods &
Zero's Night Club

"Business or Leisure, It's our
Pleasure!"

Tel: 01702 279955

Fax: 01702 541961

Aviation Way, Southend-on-
Sea, SS2 6UL



MAN OF THE MATCH
Vs TRANMERE ROVERS

TSN TELEVISION SPORT NEWS

01992 445190

PROVIDING VIDEO
& T.V. NEWS
COVERAGE FOR
SOUTHEND UNITED

THE ESSEX GOLF COMPLEX

GARON PARK, EASTERN AVENUE
SOUTHEND-ON-SEA, ESSEX SS2 4PT

PUBLIC PAY & PLAY FACILITY

18 Hole Main Course,
9 Hole Par 3 Course,
30 Bay Floodlit Driving Range,
Discount Golf Superstore, Bar,
Restaurant & Function Suite.

CALL: (01702) 601701
for more details

WESTLEIGH



at

**Westleigh
Mazda**

1355/1369 London Road,
Leigh-on-Sea, Essex
(01702) 722777

For all your Janitorial
needs visit

THE CLEANING CENTRE

Industrial Cleaning Centre
17-19 Chase Road,
Southend-on-Sea, Essex SS1 2RE
Tel: (01702) 613615
Fax: (01702) 616228

**NUMBER 1
IN ESSEX**

Statistically SPEAKING

BLUES STATISTICS - 1996/97 SEASON

SOUTHEND UNITED F.C. SOUTHEND UNITED F.C. SOUTHEND UNITED F.C. SOUTHEND UNITED F.C. SOUTHEND UNITED F.C.

NATIONWIDE LEAGUE DIVISION ONE

TEAM	P	W	D	L	F	A	PTS
BARNLEY	3	3	0	0	8	2	9
STOKE	3	3	0	0	5	2	9
TRANMERE	3	2	1	0	6	3	7
BOLTON	3	2	1	0	5	2	7
WOLVES	3	2	1	0	5	2	7
GPR	3	2	1	0	4	2	7
NORWICH	3	2	0	1	4	3	6
IPSWICH	3	1	1	1	6	4	4
BIRMINGHAM	2	1	1	0	5	4	4
CRYSTAL PALACE	3	1	1	1	3	2	4
SWINDON	3	1	1	1	2	3	4
OXFORD	3	1	0	2	6	3	3
BRADFORD	3	1	0	2	3	3	3
HUDDERSFIELD	2	1	0	1	3	3	3
PORTSMOUTH	3	1	0	2	3	5	3
READING	3	1	0	2	3	8	3
MAN CITY	3	1	0	2	2	3	3
WEST BROM	3	0	2	1	2	3	2
PORT VALE	3	0	2	1	2	4	2
SHEFFIELD UNITED	2	0	1	1	4	5	1
GRIMSBY	3	0	1	2	4	7	1
CHARLTON	2	0	1	1	1	3	1
SOUTHEND UNITED	3	0	1	2	1	7	1
OLDHAM	3	0	0	3	2	6	0

INCLUDING ALL GAMES PLAYED UP TO WEDNESDAY THE 28th



THE GROSVENOR GROUP

TODAY'S REFEREE

Name: Richard Poulain

Age (as at 1.8.96): 47 yrs

Occupation: Contract & Private Driver

Marital Status: Married

He commenced refereeing in Dagenham (1971), moved to Yorkshire 1974, 1976, Northern Counties East League 1982-1986, 1986-1989/90 Northern Premier League.

Important matches he has officiated in include the 1989 F.A. Vase Quarter Final, 1989 F.A. Trophy Semi-Final, 1995/96 Coca-Cola Cup Quarter Final and the 1995/96 Anglo Italian Cup in Salerno.

His Interests and Hobbies include Gardening, Music and DIY.

DATE	OPPONENTS & EVENT	VENUE	RES.	GATE
17 AUG	TRANMERE ROVERS	H	1-1	4,266
20 AUG	FULHAM - C.C.C ROUND 1 (1)	H	0-2	3,086
24 AUG	OXFORD UNITED	A	0-5	6,382
27 AUG	PORTSMOUTH	A	0-1	5,579
31 AUG	SWINDON TOWN	H		
3 SEP	FULHAM - C.C.C ROUND 1 (2)	A		
7 SEP	BOLTON WANDERERS	H		
10 SEP	CHARLTON ATHLETIC	A		
14 SEP	NORWICH CITY	A		
18 SEP	COCA-COLA CUP ROUND 2 (1)	-		
21 SEP	PORT VALE	H		
25 SEP	COCA-COLA CUP ROUND 2 (2)	-		
28 SEP	CRYSTAL PALACE	A		
1 OCT	SHEFFIELD UNITED	H		
5 OCT	BRADFORD CITY	A		
13 OCT	WOLVERHAMPTON WANDERERS	H		
16 OCT	GRIMSBY TOWN	H		
19 OCT	HUDDERSFIELD TOWN	A		
23 OCT	COCA-COLA CUP ROUND 3	-		
26 OCT	OLDHAM ATHLETIC	A		
29 OCT	MANCHESTER CITY	H		
2 NOV	READING	H		
9 NOV	IPSWICH TOWN	A		
16 NOV	WEST BROMWICH ALBION OR F.A.C 1	H		
23 NOV	STOKE CITY	A		
27 NOV	COCA-COLA CUP ROUND 4	-		
30 NOV	OLDHAM ATHLETIC	H		
7 DEC	BARNLEY OR F.A.C ROUND 2	A		
14 DEC	QUEENS PARK RANGERS	A		
21 DEC	BIRMINGHAM CITY	H		
26 DEC	CHARLTON ATHLETIC	H		
28 DEC	BOLTON WANDERERS	A		
1 JAN	PORT VALE	A		
4 JAN	F.A. CUP ROUND 3	-		
8 JAN	COCA-COLA CUP ROUND 5	-		
11 JAN	NORWICH CITY	H		
18 JAN	SHEFFIELD UNITED	A		
25 JAN	F.A. CUP ROUND 4	-		
28 JAN	CRYSTAL PALACE	H		
1 FEB	IPSWICH TOWN	H		
8 FEB	MANCHESTER CITY	A		
15 FEB	STOKE CITY OR F.A.C ROUND 5	H		
19 FEB	COCA-COLA CUP SEMI-FINAL (1)	-		
22 FEB	READING	A		
1 MAR	BARNLEY	H		
4 MAR	WEST BROMWICH ALBION	A		
8 MAR	BIRMINGHAM CITY OR F.A.C 6	A		
12 MAR	COCA-COLA CUP SEMI-FINAL (2)	-		
15 MAR	QUEENS PARK RANGERS	H		
22 MAR	OXFORD UNITED	H		
28 MAR	TRANMERE ROVERS	A		
31 MAR	PORTSMOUTH	H		
5 APR	SWINDON TOWN	A		
6 APR	COCA-COLA CUP FINAL	-		
12 APR	BRADFORD CITY OR F.A.C SEMI FINAL	H		
19 APR	WOLVERHAMPTON WANDERERS	A		
26 APR	HUDDERSFIELD TOWN	H		
4 MAY	GRIMSBY TOWN	A		
17 MAY	F.A. CUP FINAL	-		

1	2	3	4	5	6	7	8	9	10	11	12	13	14
ROYCE	DUBLIN	STIMSON	LAPPER	McNALLY	GRIDELET	MARSH	HAILS	BYRNE	RAMMELL	TILSON	BOERE	HARRIS	NIELSEN
ROYCE	HARRIS	DUBLIN	LAPPER	McNALLY	NIELSEN	MARSH	HAILS	BYRNE	RAMMELL	TILSON	BOERE	HANLON	ROGET
ROYCE	DUBLIN	STIMSON	LAPPER	McNALLY	GRIDELET	MARSH	BYRNE	BOERE	RAMMELL	HAILS	TILSON	HARRIS	NIELSEN
ROYCE	DUBLIN	HARRIS	LAPPER	McNALLY	GRIDELET	MARSH	ROGET	BOERE	RAMMELL	HAILS	TILSON	HANLON	BYRNE

SOUTHEND UNITED FOOTBALL CLUB

58th SPORTSMAN'S DINNER

on Monday Sept 23rd 1996

Guest Speaker arguably England's finest goalkeeper

GORDON BANKS

Dress Black Tie

Tickets £35.00 + VAT

Call the Commercial Dept. NOW on 01702 304050 for more details.

Boots & Laces

CABARET NIGHT SPOT

Southends Premier Cabaret Night • 123 Eastern Avenue, Southend-on-Sea • 01702 462111

Forthcoming attractions for August & September 1996

DATE	MAIN ARTISTE	SUPPORT ACT
Saturday 31st	CRISCO Zany Speciality Act	Bronx
Friday 6th	TRIPLE CREAM	
Saturday 7th	NIGHT & DAY Comedy Duo	Clover
Saturday 14th	KEITH THE THIEF CHARNLEY Comedy	Klass

ONLY £15.95
INC. 4 COURSE MEAL

FULLY AIR CONDITIONED
PRIVATE FUNCTIONS CATERED FOR

TEAM SHEET



SOUTHEND UNITED

Ronnie Whelan

Simon Royce

Keith Dublin

Andy Harris

Mike Lapper

Mark McNally

Phil Gridelet

Mike Marsh

Leo Roget

Jeroen Boere

Andy Rammell

Julian Hails

Steve Tilson

Richie Hanlon

Paul Byrne

1

2

3

4

5

6

7

8

9

10

11

12

13

14

SWINDON TOWN

Steve McMahon

Frank Talia

Frederic Darras

Jason Drysdale

Scott Leitch

Paul Allen

Shaun Taylor

Mark Robinson

Mark Walters

Steve Finney

Wayne Allison

Kevin Horlock

Peter Thorne

Mark Seagraves

Kevin Watson

FORTHCOMING FIXTURES

SEPT 3rd FULHAM - Coca Cola Cup A 7.45pm

SEPT 7th BOLTON - League Game H 3.00pm



THE
GROSVENOR
GROUP



THE
GROSVENOR
GROUP

TODAY'S MATCH DAY OFFICIALS

Referee: R. Poulain,

Asst. Referee: T.P. Howes & J.J. Ross

Res. Official: M.P. Gillin



MATCH DAY SPONSOR
YELLOW ADVERTISER



MATCH BALL SPONSOR
YELLOW ADVERTISER

